



Catalog: OM639069

Scan to get more validated information



MAdCAM-1 [IgG2a]

Catalog: OM639069

☐ 100 µl

Product profile

Product name	MAdCAM-1 [IgG2a]
Antibody Type	Primary Antibodies
Product description	The recirculation of lymphocytes through different organs is thought to be regulated by adhesion molecules ("homing receptors") recognizing tissue-specific vascular addressins on the endothelium. The mucosal vascular addressin, MadCAM-1 (mucosal addressin cell adhesion molecule 1), is an immunoglobulin superfamily adhesion molecule for lymphocytes that is expressed by mucosal venules and helps direct lymphocyte traffic into Peyer's patches and the intestinal lamina propria. MadCAM-1 acts as an endothelial cell ligand for leukocyte homing receptors L-Selectin and Integrin $\alpha 4/\beta 7$. MadCAM-1 is strongly expressed on inflamed portal vein/sinusoidal endothelium in autoimmune-mediated liver disease and plays a major contributory role in the progression of chronic experimental autoimmune encephalomyelitis.
Immunogen	Endothelial cells from BALB/c mouse mesenteric and peripheral lymph nodes.

Key Feature

Clonality	Monoclonal
Isotype	IgG2a
Host Species	Rat
Tested Applications	WB ,IP ,IF ,FC
Species Reactivity	Human Mouse Rat
Concentration	1 mg/ml.

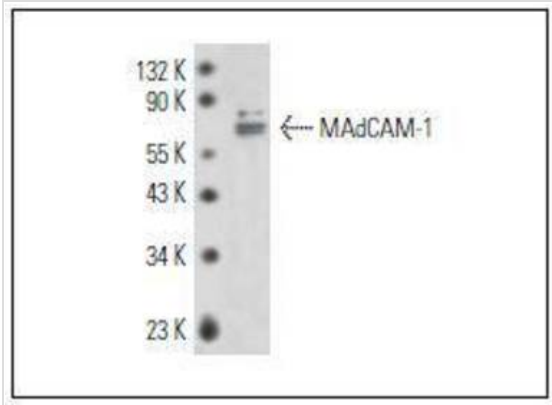
Target Information

Alternative Names	Addressin mucosal antibody hMAdCAM 1 antibody hMAdCAM-1 antibody MACAM1 antibody MADCA_HUMAN antibody MAdCAM 1 antibody MAdCAM-1 antibody Madcam1 antibody Mucosal addressin cell adhesion molecule 1 antibody Mucosal vascular addressin cell adhesion molecule 1 antibody
Molecular Weight(MW)	40/29 kDa
Cellular Localization	Membrane

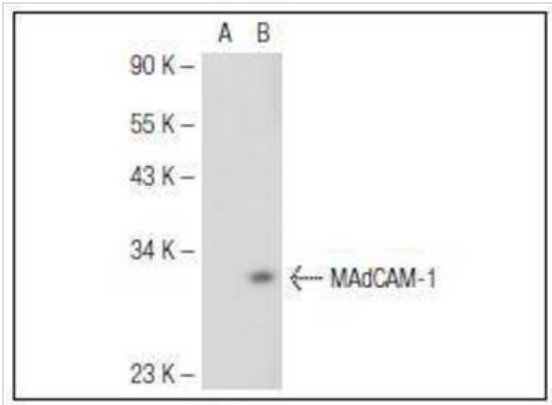
Database Links

SwissProt ID	Q13477
--------------	--------

Application



Application
Fig1: Western blot analysis of MAdCAM-1 expression in ECV304 whole cell lysate.



Application
Fig2: Western blot analysis of MAdCAM-1 expression in non-transfected (A) and mouse MAdCAM-1 transfected (B) 293T whole cell lysates.

Positive Control	ECV304, 293T.
Application Notes	WB: 1:100-1:1,000 IP: 1-2 µg per 100-500 µg of total protein(1 ml of cell lysate) IF: 1:50-1:500 FC: 1 µg per 1 x 10 ⁶ cells

Additional Information

Form	Liquid
Storage Instructions	Store at +4°C.
Storage Buffer	1*TBS (pH7.4), 1%BSA, 40%Glycerol. Preservative: 0.05% Sodium Azide.
Note	The product is for research use only,not for use in diagnostic or therapeutic procedures.

506 N. GARFIELD AVE #210 ALHAMBRA, CA 91801

This product is for research use only and is not approved for use in humans or in clinical diagnosis. Primary Antibodies are guaranteed for 1 year from date of receipt

